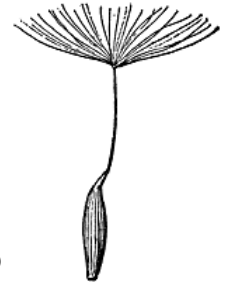
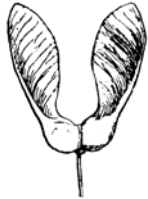


Step Outdoors

2. Once the plants make seeds, how do they spread these seed throughout the area?

Discuss three different modes of seed dispersal:

1. **Wind Dispersal** - The wind carries seeds equipped with tiny parachute - like attachments to new locations where they can grow (dandelions and Cattails) or the seeds can be shaped like helicopter blades which when they fall from the tree they are carried by the wind as they fluttered to the ground. (Maple Tree)



2. **Berries and Seeds** - The seed(s) is contained within a tasty attractive package, which is eaten by many different animals. The seed is dispersed when excreted from the animal or carried to a new location for storage.



3. **Hitch Hiker** - The seeds are protected within a case covered in Velcro-like structures which attach themselves to anything furry that brushes into them. The animal eventually removes this 'burr' by scratching or nibbling the irritation, thus dropping the seeds into a new location.



ACTIVITY

Outdoor Hike

Take the students on a wildflower discovery hike in a wild habitat near you. Look for the 3-types of seed dispersion discussed earlier.

During the walk, have the group identify the **Poison Ivy plant**. See Identification and description of this plant in the Chapter "Native Wildflowers 1"

Step Outdoors

Indoor Discussion

1. Review with the group the 3 types of seed dispersal found during their hike.
2. Review the process of pollination and how bees are main pollinators of many plants. Serve a treat of honey and crackers and discuss what honey is (modified nectar gathered by the bees from the plants - as bees gather this sweet treat, they pick-up pollen from that plant and spread it to another plant).

REFERENCES

"Wildflowers Across the Prairies", by Vance, Jowsey, McLean

Hitch Hiker Website: <http://waynesworld.palomar.edu/>

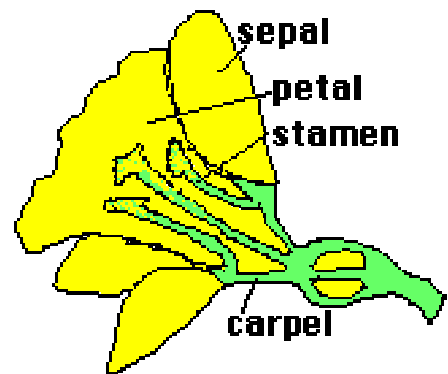
Pollination Website: <http://libray.thinkquest.org>

Background Information

What is a Flower?

A flower is the part of the plant that makes the seeds. The main parts of a flower are the carpels and stamens. These parts are often found in the center of the flower. There are egg cells in the carpel and pollen cells in the stamen.

All flowers have four basic parts: **sepals**, **petals**, **carpels** and **stamen**. Different flowers have different numbers and shapes of these parts.



Parts of a Flower